

# System Track & Floor Plates

L Track is the most commonly used floor anchoring product in vehicle conversions (layout/configuration). Its ease of installation, light weight and superior strength make it a natural choice for anchoring wheelchair securements as well as seats to vehicle floors and walls.

Customized special length track is available. L Tracks are also available in a clear anodized or black anodized finish. Contact customer service for more information about our special order products.

Sure-Lok Heavy-Duty Series L Tracks are made of high-strength, 7075-T6, aircraft-quality aluminum alloy. Medium-Duty L Tracks are made from 6061-T6 or equivalent aluminum alloy.

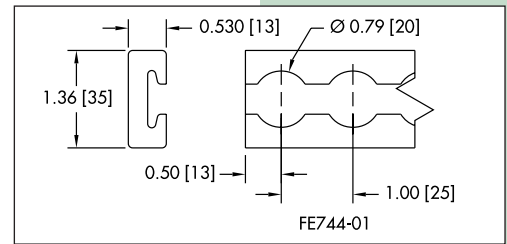
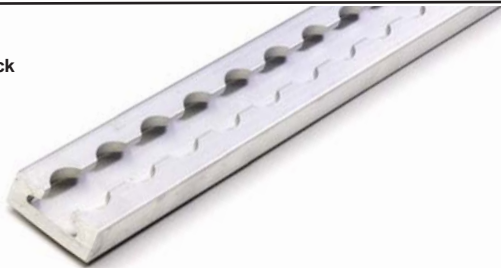
Proper track selection is necessary for the installation of Sure-Lok Wheelchair Tie-Downs and Occupant Restraint Systems. See pages 27–30 for additional information. Sure-Lok L Track can be supplied undrilled if necessary, however we strongly recommend that extreme care be taken when drilling, countersinking or counterboring the holes as the tolerances are critical. Information is available from our customer service department regarding dimensional tolerances.



## FE744-01

### Heavy-Duty Series L Track

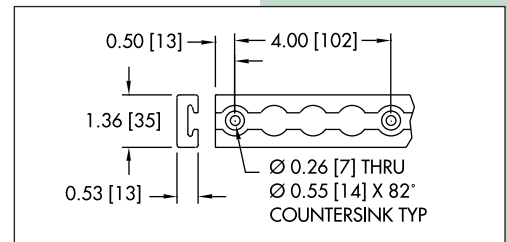
Material: Aluminum  
Finish: Natural  
Weight: 5.2 lb/2.4 kg  
Length: 100 in/2.5 m



## FE744-01-PD4

### Heavy-Duty Series L Track with Mounting Holes

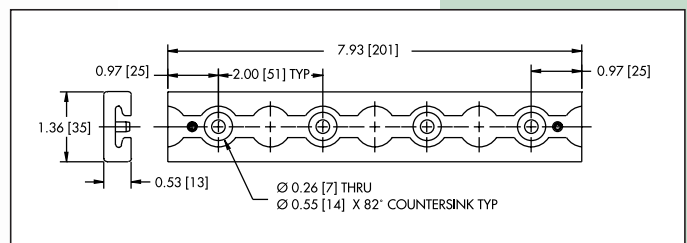
Material: Aluminum  
Finish: Natural  
Weight: 5.0 lb/2.3 kg  
Length: 100 in/2.5 m



## FE200761

### Heavy-Duty Series L Track 8" Section with 4 Holes

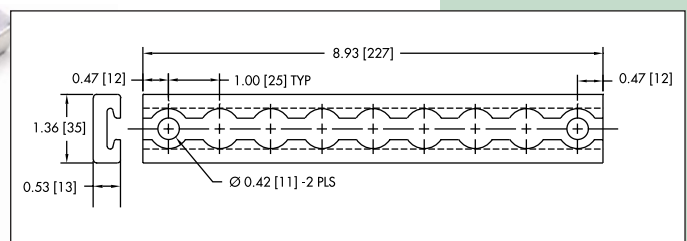
Material: Aluminum  
Finish: Natural  
Weight: 0.4 lb/0.18 kg



## FE200762

### Heavy-Duty Series L Track 9" Section with 2 Holes

Material: Aluminum  
Finish: Natural  
Weight: 0.4 lb/0.18 kg

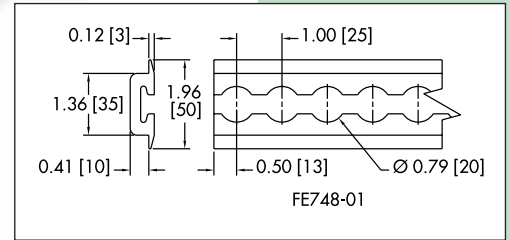


# System Track

## FE748-01

### Heavy-Duty Series L Track with Flanges

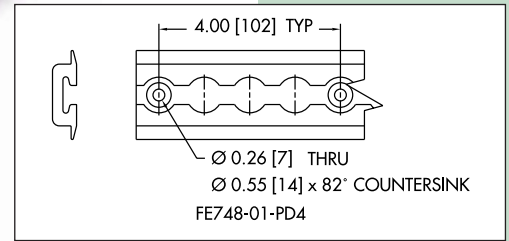
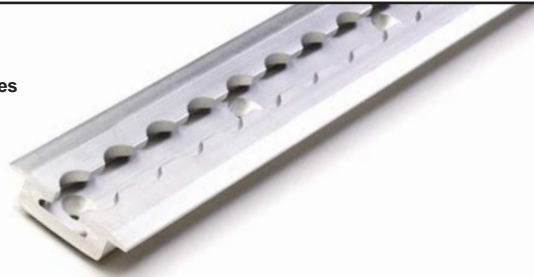
Material: Aluminum  
 Finish: Natural  
 Weight: 5.6 lb/2.6 kg  
 Length: 100 in/2.5 m



## FE748-01-PD4

### Heavy-Duty Series L Track with Flanges and Mounting Holes

Material: Aluminum  
 Finish: Natural  
 Weight: 5.4 lb/2.5 kg  
 Length: 100 in/2.5 m



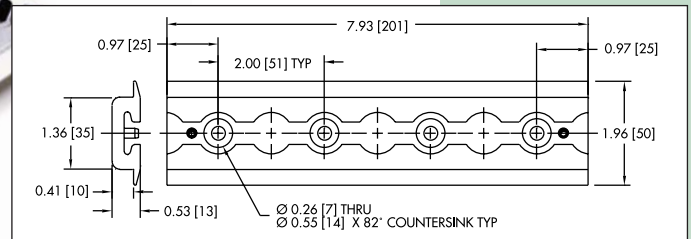
## FE748-01-PD4C

with Clear Anodized Finish

## FE200763

### Heavy-Duty Series L Track with Flanges 8" Section with 4 Holes

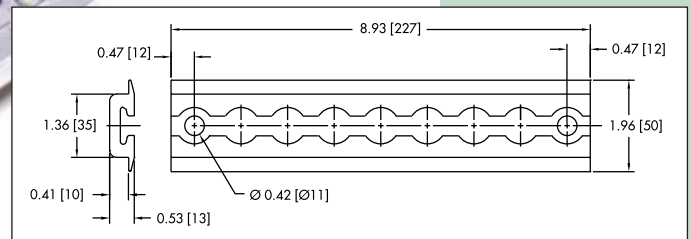
Material: Aluminum  
 Finish: Natural  
 Weight: 0.5 lb/0.23 kg



## FE200765

### Heavy-Duty Series L Track with Flanges 9" Section with 2 Holes

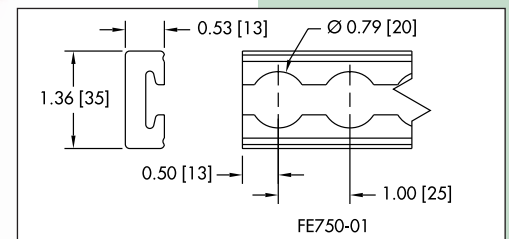
Material: Aluminum  
 Finish: Natural  
 Weight: 0.5 lb/0.23 kg



## FE750-01

### Medium-Duty Series L Track

Material: Aluminum  
 Finish: Natural  
 Weight: 5.0 lb/2.3 kg  
 Length: 100 in/2.5 m

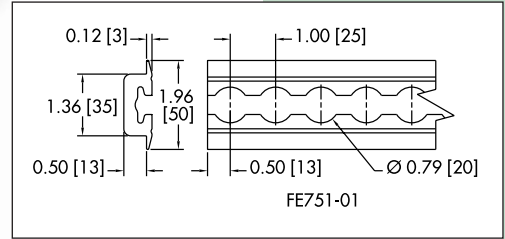


# System Track

## FE751-01

### Medium-Duty Series L Track with Flanges

Material: Aluminum  
 Finish: Natural  
 Weight: 5.4 lb/2.5 kg  
 Length: 100 in/2.5 m

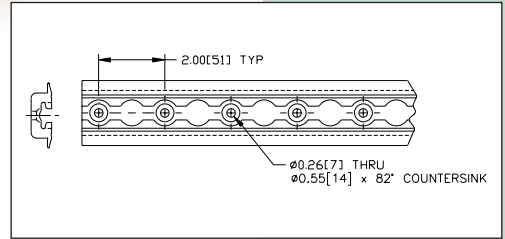


## FE751-01-PD2



### Medium-Duty Series L Track with Flanges and Mounting Holes

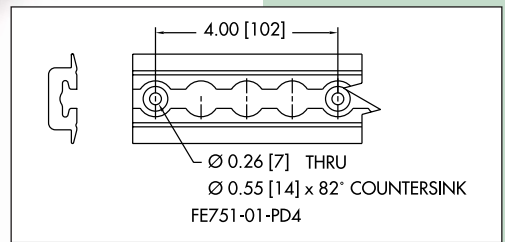
Material: Aluminum  
 Finish: Natural  
 Weight: 5.2 lb/2.4 kg  
 Length: 100 in/2.5 m



## FE751-01-PD4

### Medium-Duty Series L Track with Flanges and Mounting Holes

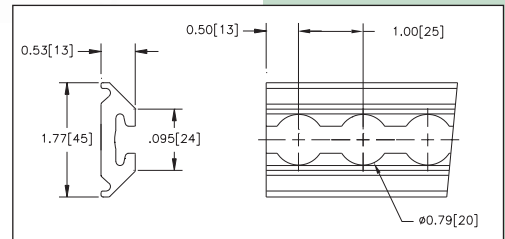
Material: Aluminum  
 Finish: Natural  
 Weight: 5.2 lb/2.4 kg  
 Length: 100 in/2.5 m



## FE752-01

### Medium-Duty Angled Series L Track

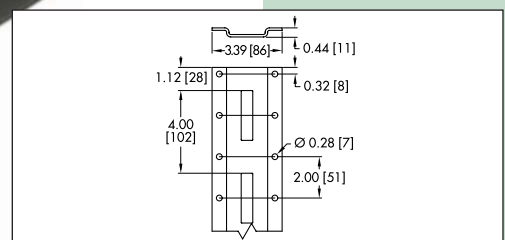
Material: Aluminum  
 Finish: Natural  
 Weight: 5.2 lb/2.4 kg  
 Length: 100 in/2.5 m



## 2025

### Heavy-Duty Series A Vertical Track

Material: High-Strength Steel;  
 11 gauge  
 Minimum Yield: 50,000 psi.  
 Finish: Gun Metal Grey,  
 Powder Coat  
 Weight: 13.0 lb/5.9 kg  
 Length: 10 ft/3.0 m



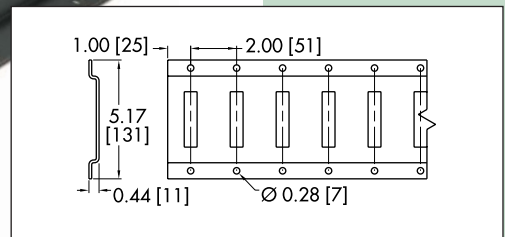
## 2025-060

60 inch section

## FE702-01

### Heavy-Duty Series A Horizontal Track

Material: High-Strength Steel;  
 11 gauge  
 Minimum Yield: 50,000 psi.  
 Finish: Gun Metal Grey,  
 Powder Coat  
 Weight: 18.5 lb/8.4 kg  
 Length: 10 ft/3.0 m



## FE702-01-060

60 inch section

## FE702-01UP

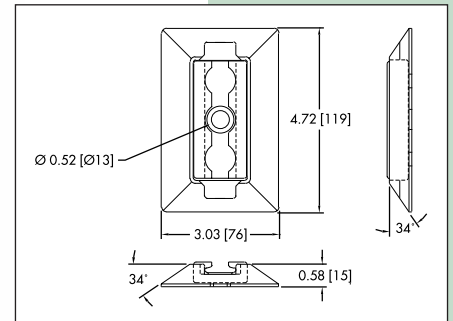
Unpainted

# Floor Plates

## FE200784

### Series L Single Bolt Surface Mount Floor Plate Kit

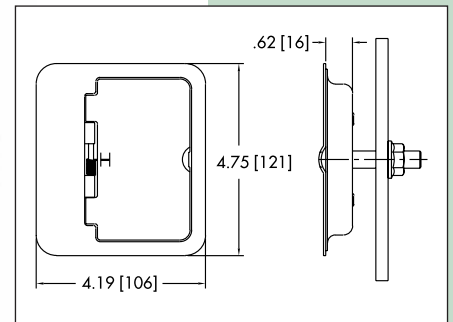
Material: Impact-Resistant Plastic Ramped Collar with Steel L Track Section  
 Finish: Zinc Plated  
 Weight: 0.9 lb/0.41 kg



## FE200844

### Series L Single Bolt Flush Mount Floor Plate Kit

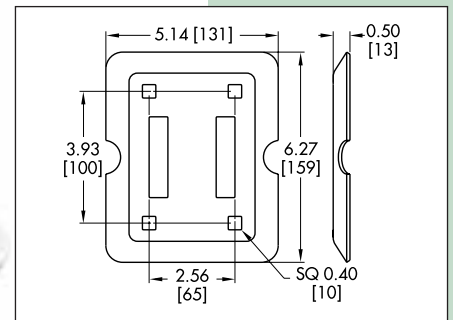
Material: Stainless Steel Case with Steel Track Section  
 Finish: Zinc Plated  
 Weight: 2.2 lb/1.0 kg



## FE200742

### Series A Floor Plate Kit Includes:

1. FE200740 (Qty. 1) Floor Plate
  2. FE200741 (Qty. 1) Backing Plate
  3. GR5 Carriage Bolts (Qty. 4) 3/8"-16 x 2
  4. Nylon Lock Nuts (Qty. 4) 3/8"-16
  5. Washers (Qty. 4) 3/8" I.D. x 2 1/2" O.D. x 1/16" Thick
- Weight: 1.9 lb/0.86 kg



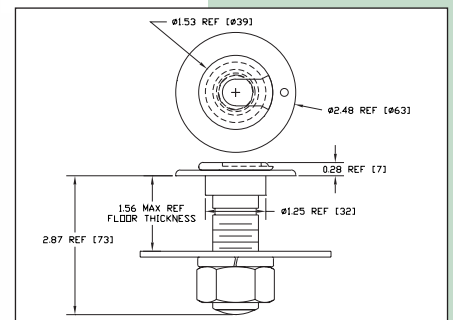
## FE200922

**new**

### Solo Floor Anchor

The Solo Floor Anchor, Backing Plate, Lock Washer and Nut are used with the FF660 and FF661 Solo Retractor Series Systems.

Use of the FE200937 Solo Anchor Installation Tool is required for all FE200922 Solo Floor Anchor installations.



## FE200937

**new**

### Solo Anchor Installation Tool

FE200937 Solo Anchor Installation Tool is required for all FE200922 Solo Floor Anchor installations. The tool prevents the floor anchor from rotating during installation.

